



"Inspired design in a superb location"

Ptarmigan Lodge

AVIEMORE





“Where the Highlands become your home”

Nestling on the banks of River Nethy, Ptarmigan Lodge enjoys a superb location in Nethy Bridge – the ‘forest village’. The lodge has been designed in the style of a North American ski lodge and enjoys relaxing views across the river to the ancient Abernethy Forests. The nearby Cairngorms are home to the elusive Ptarmigan, a rare mountain dwelling bird, after which the lodge is named.

The heart of Ptarmigan Lodge is a spacious open plan living space. The main living area is warmed by a solid fuel fire, and the glass frontage offers superb views of the river and forest beyond. The kitchen is large and spacious and equipped with every modern comfort. There are four bedrooms which together with an additional sofa bed in the ‘snug’, provide sleeping accommodation for up to 10 guests. The master bedroom has en-suite facilities with the others served by a large bathroom/ showerroom.



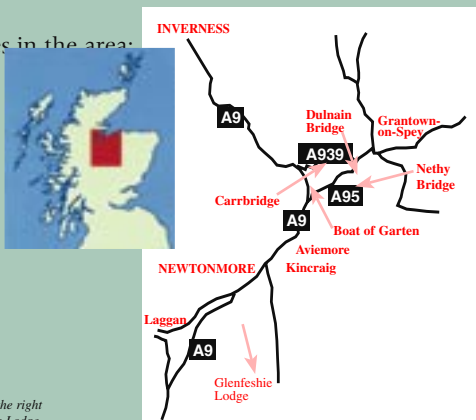
The large south facing garden slopes down towards its own private stretch of the River Nethy and benefits from a large decked area – ideal for BBQ’s and outdoor living.

At a glance

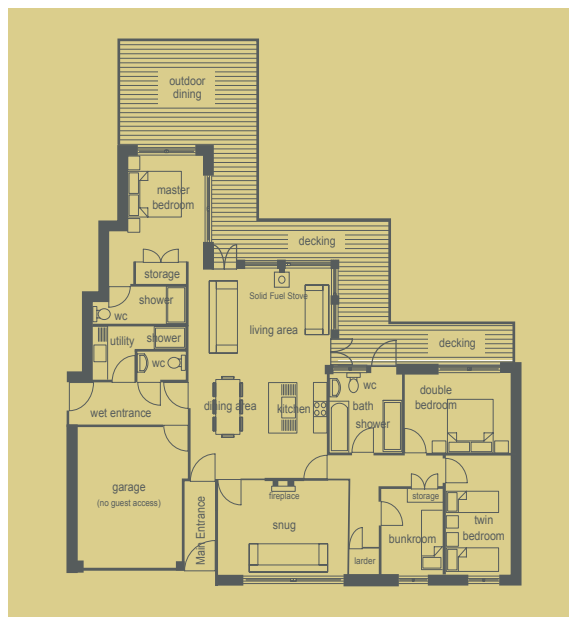
- 10 Guests
- Two double bedrooms, one twin bedroom, one bunk bedroom, additional double sofa bed
- Ample storage
- Central heating
- Double glazed throughout
- Solid fuel fire
- Satellite, TV, video, DVD, Playstation, small library of cd's, boardgames etc
- Two large decked areas with gas BBQ & outdoor furniture
- All crockery, glasses, cutlery, towels, bed linen and duvets for max. occupancy
- All kitchen utensils, cookware, appliances
- Washer/dryer, drying room, dishwasher, two fridges, freezer
- Travel cot, high chair, and fire guard available
- Bike shelter
- Outdoor climbing frame

Throughout the lodge, the decoration is crisp, clean and modern - but at the same time it is completely relaxed. All the bedrooms are themed, including the skiing room and the sailing room. At the side of the lodge, a 'wet' entrance is provided allowing you to enter in outdoor gear, strip off, and dive straight into a hot shower!

Activities in the area:



Great North Lodges Ltd reserve the right to change any specification of the Lodge



For availability and reservations contact:

Great North Lodges Ltd
The Riverhouse Stables
2a Dalfaber Road
Aviemore
PH22 1PU
SCOTLAND

Tel: 0870 2416970
Fax 01479 812244

Email: gnl@greatnorthlodges.co.uk
Web: www.greatnorthlodges.co.uk

